



Evaluation of SIP Call-Feature Signaling for Usability in Voice Communication Systems

Christoph Kurth

Institut für
Computertechnik

ICT

Institute of
Computer Technology

in cooperation with

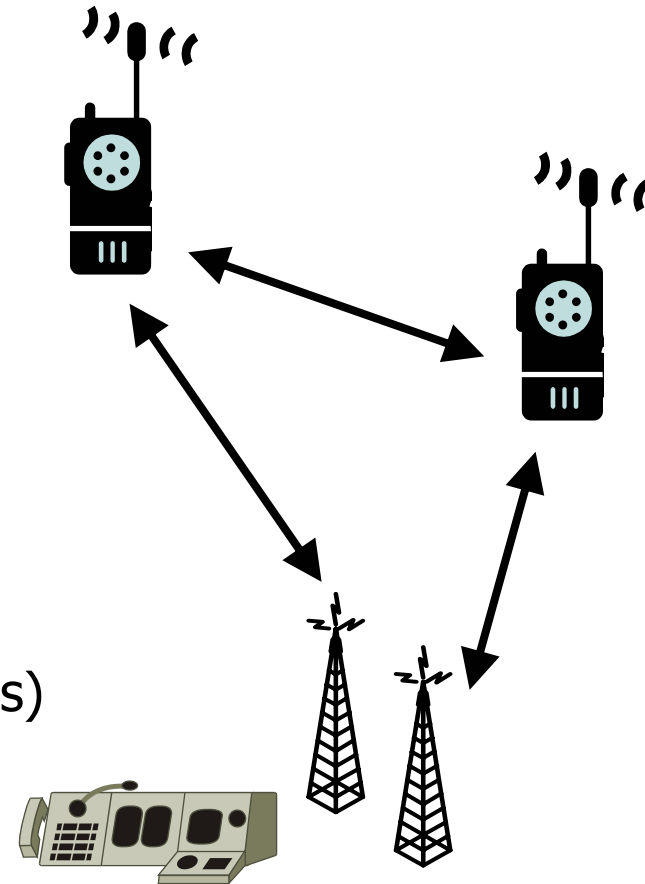
FREQUENTIS

Radio Communication Properties

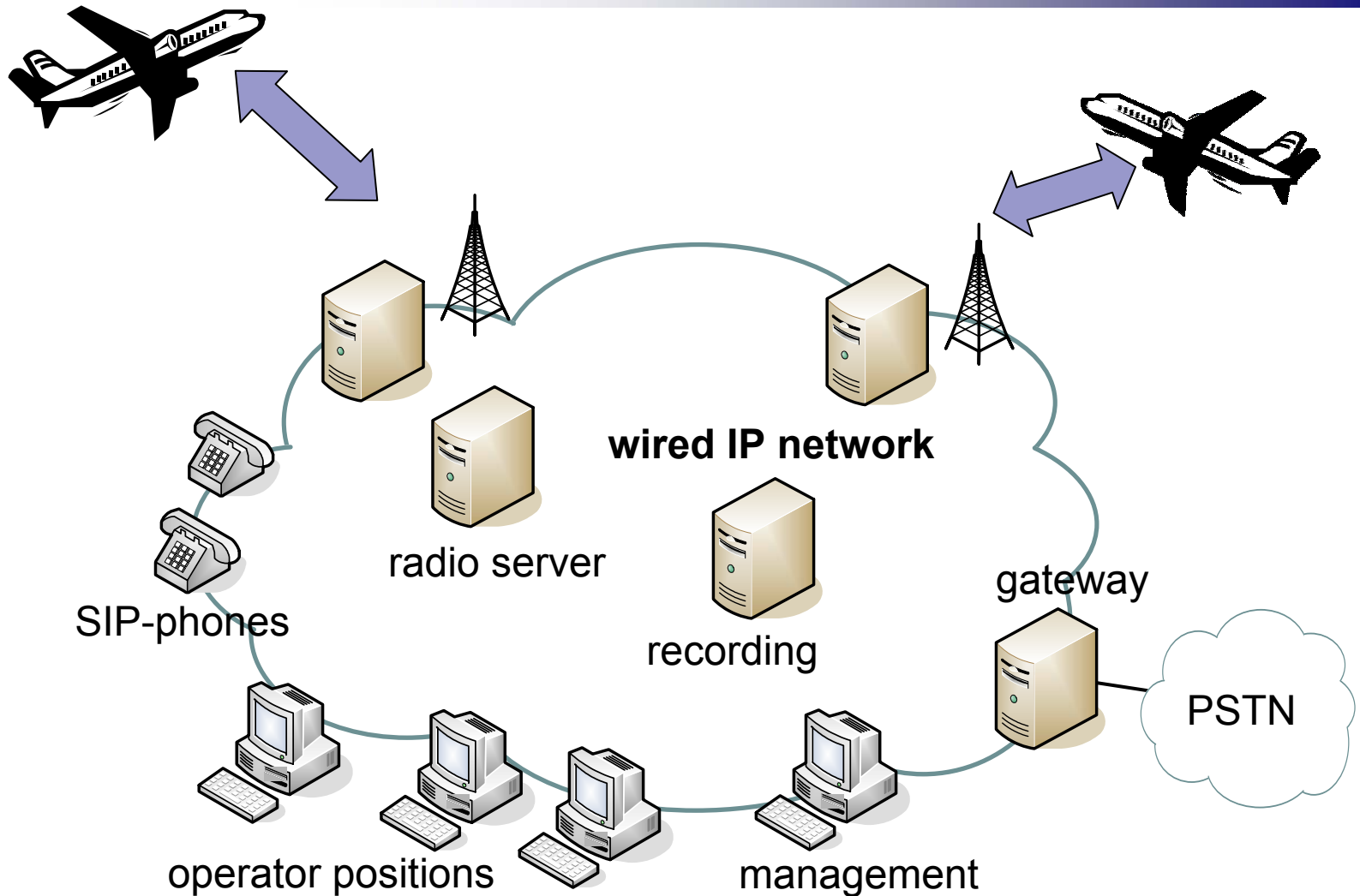
- area of application
 - air traffic control
 - public safety
 - disaster operation
- basic principles
 - usually AM-radios
 - shared medium (collisions)
 - half-duplex
 - listen before talk

Radio Communication

- like walkie talkies
- transmit a radio message
 - press the “push-to-talk” button (PTT)
- incoming radio message
 - squelch indicator (SQU)
- 2 signals required:
 - PTT (powers up transmitter)
 - SQU (indicates incoming radio messages)



Air Traffic Control

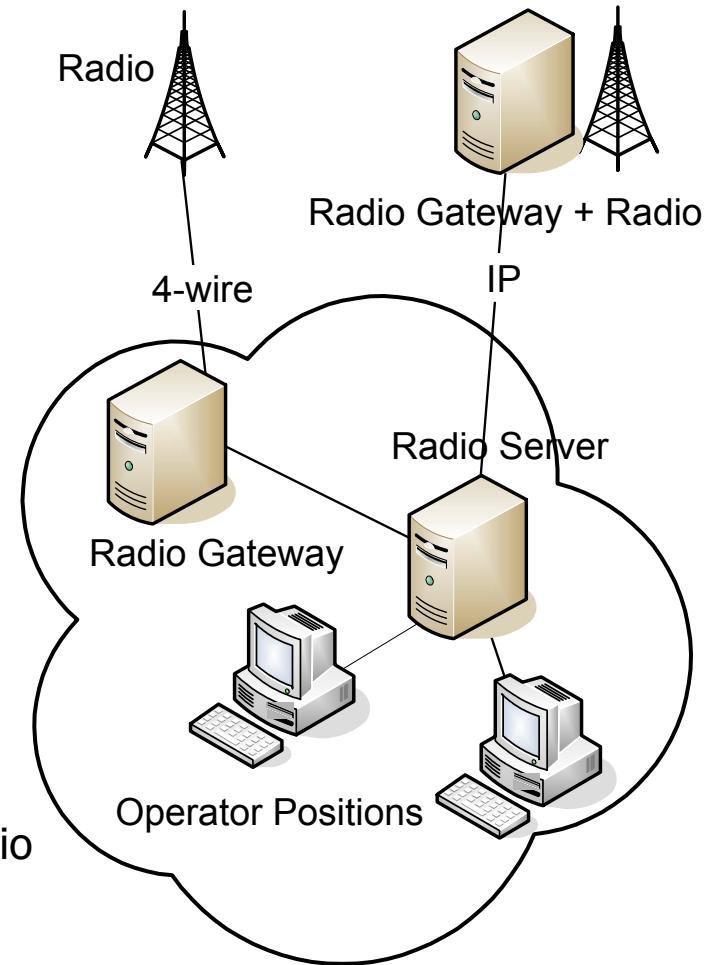


Radio Signalling using SIP

- Signalling
 - PTT/SQU via Event Notification
 - Floor Control Application
(radio server = floor control server, floor chair)
- Audio Transmission
 - RTP, RTCP
- Hardware
 - COTS servers
 - COTS working positions
 - dedicated SIP servers
 - SIP phones

Radio Architecture Components

- working position
 - provides key-in to radio channels
 - PTT-button, SQU-display
- radio senders and receivers
 - typically on remote sites
 - one voice channel per radio
 - low bandwidth connection
- radio server
 - manages the access to the radios
 - distributes the received radio messages
- radio gateway
 - translates SIP signaling to radio control lines
 - translates RTP audio packets to analogue audio

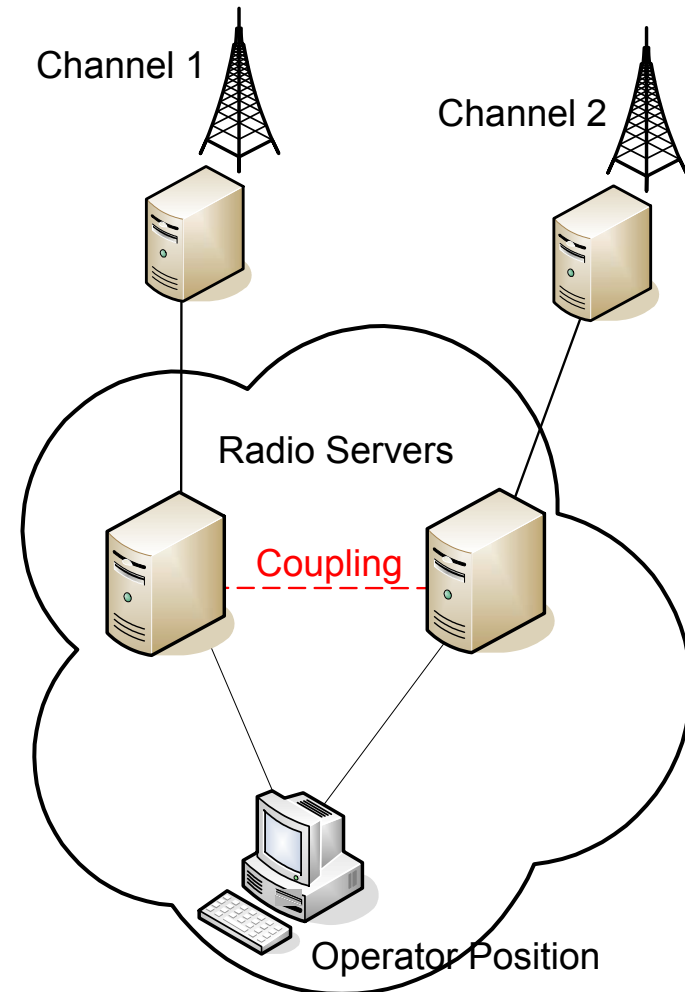


- emerged over the years
- necessary for executing an operator's task
- features well proven

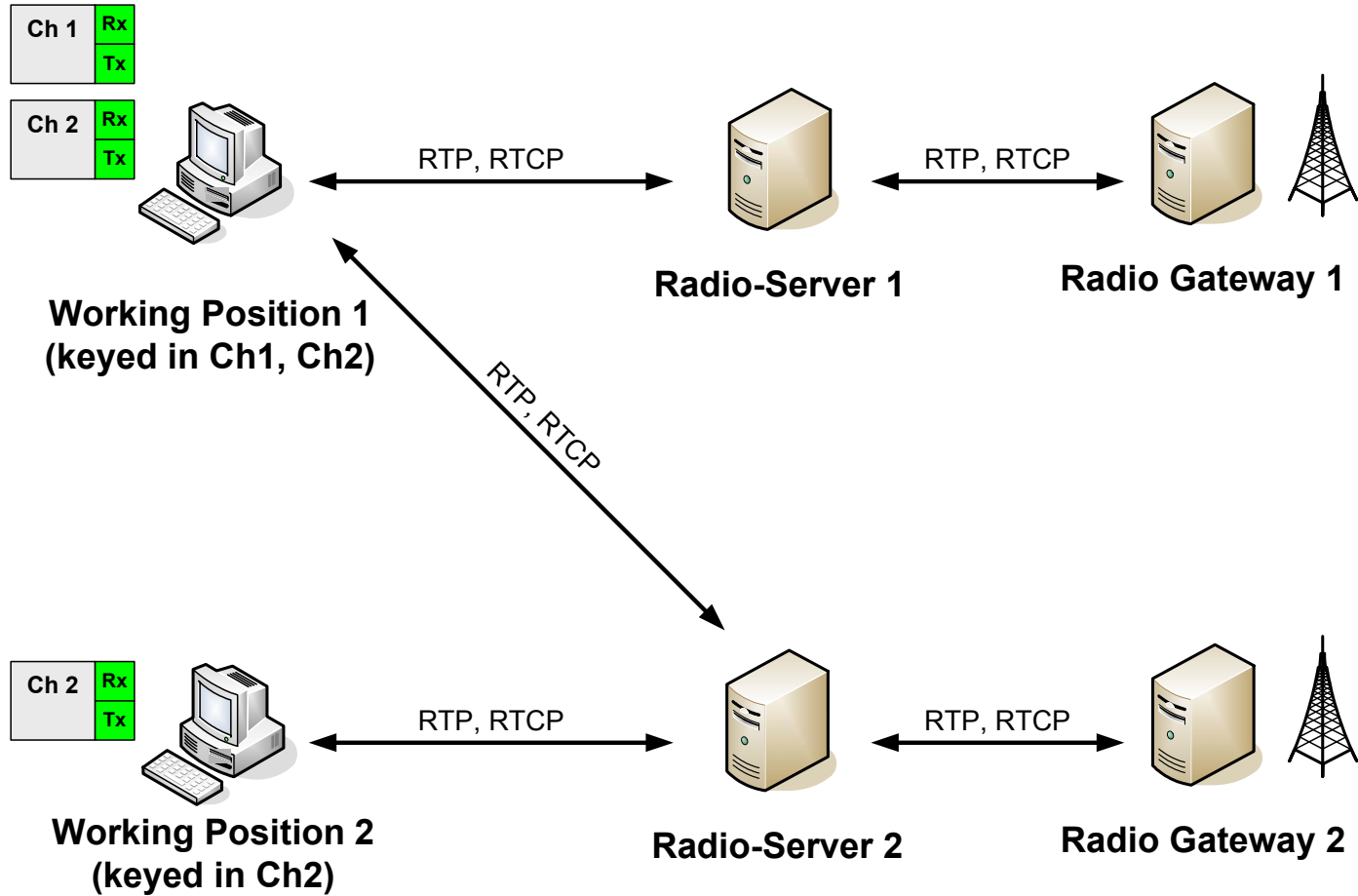
- Features:
 - Frequency Cross Coupling
 - Frequency Forward
 - Frequency Intercom
 - Radio Remote Control
 - Status Information
 - Availability Concepts (Redundancy, Main/Backup Systems)

Frequency Cross Coupling

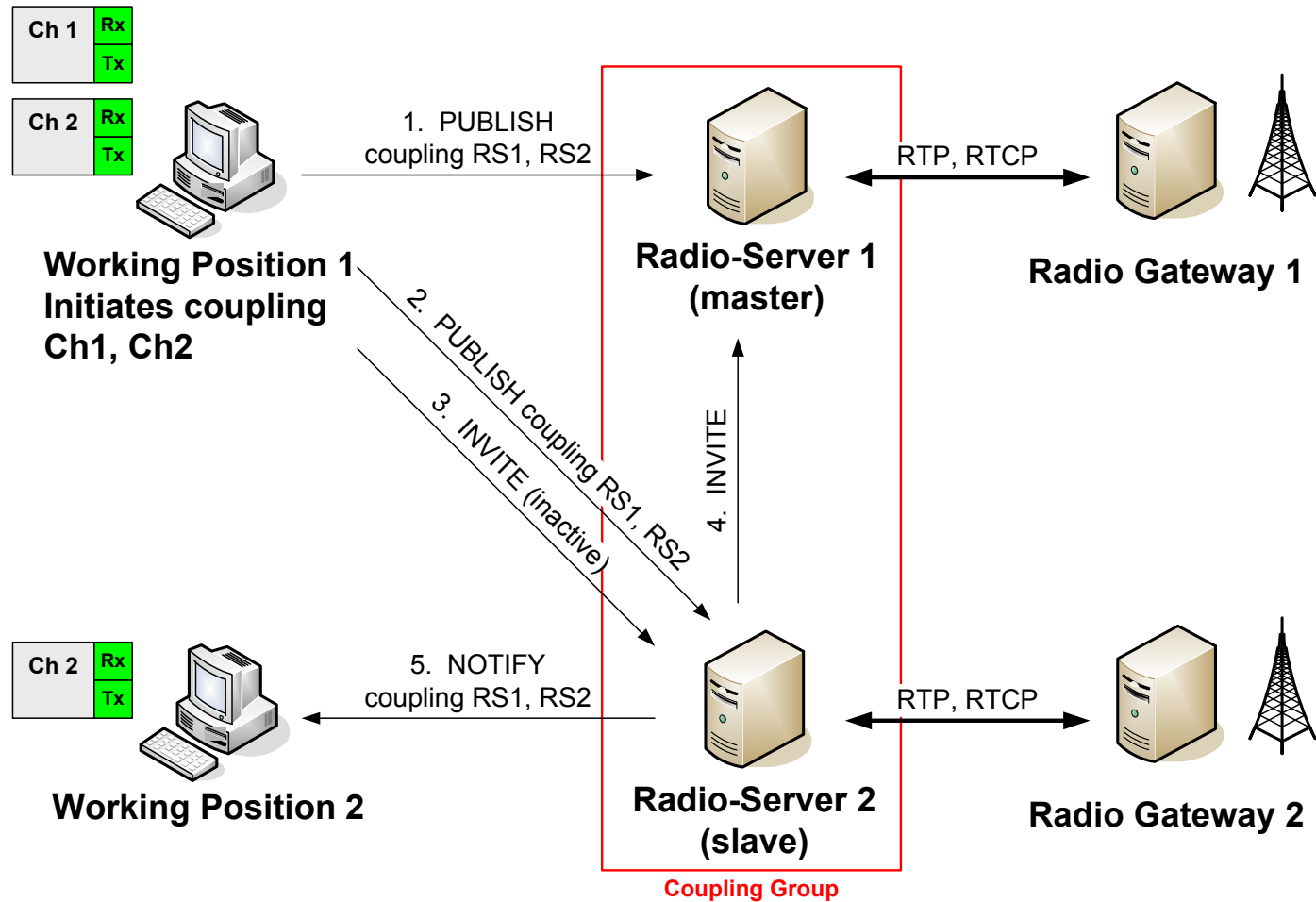
- coupling multiple channels accessible like a single virtual channel by all users keyed-in at a frequency involved
- initiated by
 - any operator
 - master operator
 - management system
- Compatibility with standard SIP-phones
- Radio Repeater functionality
- Area of application
 - different missions
 - larger fields of activity in times of reduced traffic



Before Coupling



Initiating Coupling

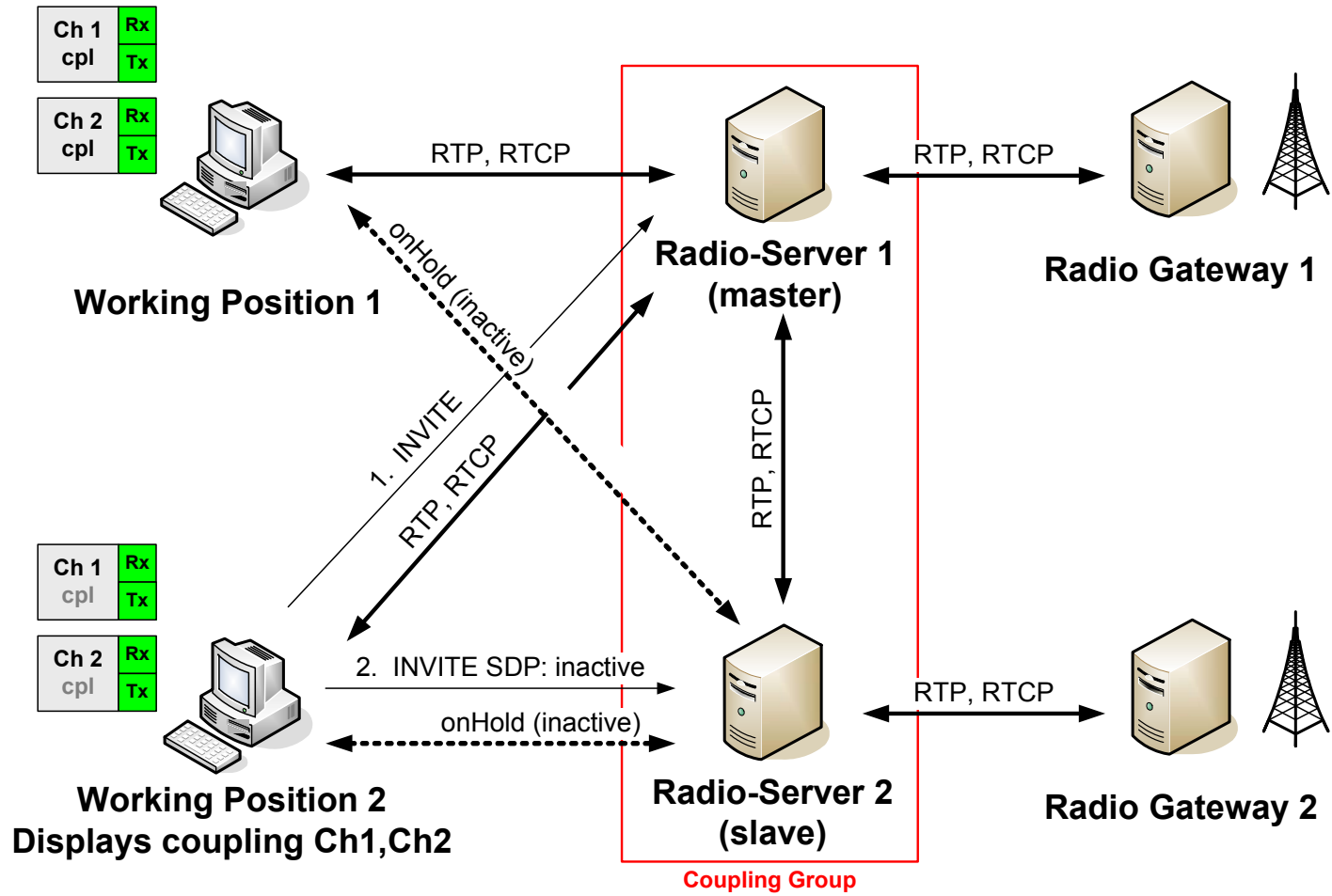


Initiating Coupling

```
PUBLISH sip:operator12@pc44.atc-center.org SIP/2.0
Via: SIP/2.0/UDP 128.131.80.6:5062
From: "radio34" <sip:radio34@atc-center.org>;tag=F68
To: "operator12" <sip:operator12@atc-center.org>;tag=1ec23337
Contact: "radio34" <sip:radio34@128.131.80.6:5062;transport=udp>
Call-ID: 3c9196445d5240bfb7b660a16ee6d390@128.131.80.223
CSeq: 10 PUBLISH
Event: Coupling
Expire: 60
Content-Type: text/plain
Content-Length: 76
```

```
master-radio=sip:ch100@atc-center.org
slave-radio=sip:ch24@atc-center.org
slave-radio=sip:ch36@atc-center.org
```

Final Coupling Signaling



Coupling Notification

```
NOTIFY sip:operator12@pc44.atc-center.org SIP/2.0
Via: SIP/2.0/UDP 128.131.80.6:5062
From: "radio34" <sip:radio34@atc-center.org>;tag=F68
To: "operator12" <sip:operator12@atc-center.org>;tag=1ec23337
Contact: "radio34" <sip:radio34@128.131.80.6:5062;transport=udp>
Call-ID: 3c9196445d5240bfb7b660a16ee6d390@128.131.80.223
CSeq: 522 NOTIFY
Event: Coupling
Expire: 60
Content-Type: text/plain
Content-Length: 76
```

```
master-radio=sip:ch100@atc-center.org
slave-radio=sip:ch24@atc-center.org
slave-radio=sip:ch36@atc-center.org
```

Performance Aspects

- **Signaling Delay**
not as important as with phone-calls or intercom services
- **Audio Delay**
no jitter buffers, simple RTP forwarding
(no conferencing required)
- **Failsafe Operation**
 - SIP expiry mechanism
 - Additional keep-alive messages

- WAN measurements
 - remote radio server (additional PTT delay)
- reliability
 - especially bandwidth reservation for WANs
 - interaction of QoS mechanisms with SIP
- combination of enhanced radio services
- security aspects
 - audio encryption

www.ict.tuwien.ac.at
kurth@ict.tuwien.ac.at