

HOW DOES THE SPATIAL SCALE AND THE SELECTION OF ANCILLARY DATA INFLUENCE THE EVALUATION OF EO SOIL MOISTURE PRODUCTS?

Marcela Doubková¹, Alena Hegyová², Wouter Dorigo², Albert Van Dijk³, Diego Fernández-Prieto¹

E-mails: marcela.doubkova@esa.int, wd@ipf.tuwien.ac.at, ww@ipf.tuwien.ac.at,
albert.vandijk@anu.edu.au, diego.fernandez@esa.int

¹European Space Agency, ESRIN, Via Galileo Galilei, 00044 Frascati, Italy

²Vienna University of Technology, Institute of Photogrammetry and Remote Sensing, Gußhausstraße
27-29, 1040 Vienna, Austria

³Australian National University (ANU), College of Medicine, Biology and Environment, Canberra,
Australia

1. INTRODUCTION

The key usage of soil moisture (SSM) products from Earth Observation (EO) is their assimilation into hydrological models. The data assimilation techniques require a well characterized error to be provided with the product. Understanding errors of EO surface SSM datasets is indispensable also for extractions of blended SSM products (Liu et al., 2011), as well as for their usage in evaluation of other SSM datasets.

The past dominant evaluation approaches for SSM datasets consisted of the computation of correlation coefficient (R) and the root mean square error (RMSE) between remotely sensed and in-situ data where the ground-based measurements were held to be of higher accuracy (e.g. Ceballos et al., 2005; Gruhier et al., 2010; Wagner et al., 2007). Nevertheless, only the in-situ networks could not allow global evaluations given their limited spatial coverage. In the last decade, a large amount of remotely sensed soil moisture datasets have become available (Kerr et al., 2010; Njoku et al., 2003; Pathe et al., 2009; Wagner et al., 1999) that utilize independent algorithms and have an independent error structure. These products allowed for global evaluation activities in the soil moisture domain and initiated usage of new evaluation measures such as triple collocation (Dorigo et al., 2010; Scipal et al., 2008), or error propagation (EP) methods (Naeimi et al., 2009; Pathe et al., 2009).

Recently, another evaluation method, predicted RMSE, was introduced that evaluated the standard error of the Advanced Synthetic Aperture Radar (ASAR) Global Mode (GM) SSM using a soil moisture estimate from a hydrological model (Doubková et al., 2012) and enabled also the estimation of R between the two datasets if standard errors are known. The necessary prerequisite of the method was a good understanding of the standard errors of both datasets and their independency. Importantly, using the Australian Water Assessment System (AWRA-L) hydrological model the authors of the study concluded that RMSE is governed by the spatial distribution of the error of the ASAR GM dataset at 1 km scale.

The objective of this presentation is to study: a) if the conclusion introduced in the previous paper holds independent of spatial scale of the input datasets, b) if and how do the results of the absolute and relative evaluation measures change with spatial scale, and c) where do the differences between different relative and absolute evaluation measures stem from. To study the above listed questions the medium resolution ASAR GM SSM product is compared with hydrological models (either AWRA-L, GLDAS-NOAH, or ERA-Interim) acting at a diversity of scales ranging from 5 to 86 km as well as with in-situ data representing only several square meters.

2. RESULTS

The continental average absolute evaluation measures over Australia ranged between 2.65 % (for EP) and 8.44 % (for RMSE when computed with AWRA-L) of saturated soil moisture. The relative evaluation measures spanned from 0.39 (R_S when computed with AWRA-L SSM) to 0.57 (R_S when computed with GLDAS). Clearly, the resulting values vary between discrete relative and absolute evaluation measures and appear to be influenced by the selection of the ancillary dataset and its spatial resolution. The spatial patterns of R_S and R corresponded rather well and demonstrated significantly different spatial patterns to any of the absolute measures. Surprisingly large differences were encountered between different absolute evaluation measures. In particular, the spatial patterns of the EP significantly differed from RMSE (Figure 1) what is in contrary to the similar analyses performed at 1 km scale (Doubková et al., 2012). This finding suggests that the selection of spatial scale may change the absolute values of absolute evaluation measures as well as their spatial patterns.

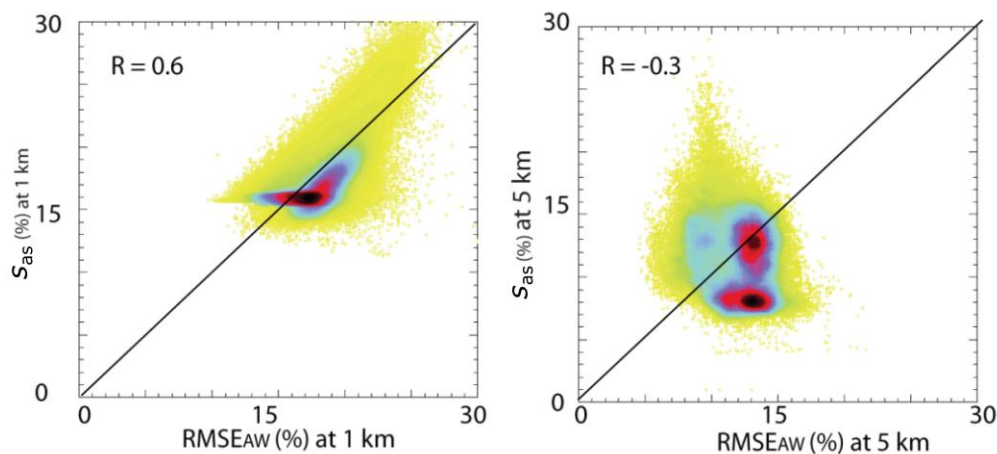


Figure 1 - Scatterplots between observed RMSE (computed between ASAR GM and AWRA-L SSM) and error propagation (EP) error (s_{as}) computed at the 1 km (left) and at the 5 km (right) spatial scale computed over the area of interest (700x700 km) in central Australia. The color represents the density of points ranging from high (black) to very low (yellow).

The findings and suggestions originating from the discussion are transferable to other EO soil moisture data. Of special interest is its transfer to data from the planned Sentinel-1 SAR sensor that shares similar technical characteristics but has an improved retrieval error comparable to the ASAR GM sensor. The operationally available medium resolution soil moisture from Sentinel-1 with a well-characterized error is likely to yield benefits for modelling and monitoring of land surface-atmosphere fluxes, crop growth and water balance applications.

3. REFERENCES

- Ceballos, A., Scipal, K., Wagner, W., & Martínez-Fernández, J. (2005). Validation of ERS scatterometer-derived soil moisture data in the central part of the Duero Basin, Spain. *Hydrological Processes*, 19(8), 1549–1566.
- Dorigo, W., Scipal, K., Parinussa, R. M., Liu, Y. Y., Wagner, W., De Jeu, R. A. M., & Naeimi, V. (2010). Error characterisation of global active and passive microwave soil moisture datasets. *Hydrology and Earth System Sciences*, 14(12), 2605–2616. doi:10.5194/hess-14-2605-2010
- Doubková, M., Van Dijk, A. I. J. M., Sabel, D., Wagner, W., & Blöschl, G. (2012). Evaluation of the predicted error of the soil moisture retrieval from C-band SAR by comparison against modelled soil moisture estimates over Australia. *Remote Sensing of Environment*, 120, 188–196.
- Gruhier, C., De Rosnay, P., Hasenauer, S., Holmes, T., De Jeu, R., Kerr, Y., Mougin, E., et al. (2010). Soil moisture active and passive microwave products: Intercomparison and evaluation over a Sahelian site. *Hydrology and Earth System Sciences*, 14(1), 141–156.
- Kerr, Y. H., Waldteufel, P., Wigneron, J. P., Delwart, S., Cabot, F., Boutin, J., Escorihuela, M. J., et al. (2010). The SMOS L: New tool for monitoring key elements of the global water cycle. *Proceedings of the IEEE*, 98(5), 666–687.
- Liu, Y. Y., Parinussa, R. M., Dorigo, W. A., De Jeu, R. A. M., Wagner, W., M. Van Dijk, A. I. J., McCabe, M. F., et al. (2011). Developing an improved soil moisture dataset by blending passive and active microwave satellite-based retrievals. *Hydrology and Earth System Sciences*, 15(2), 425–436.
- Naeimi, V., Scipal, K., Bartalis, Z., Hasenauer, S., & Wagner, W. (2009). An improved soil moisture retrieval algorithm for ERS and Metop Scatterometer observations. *IEEE Transactions on Geoscience and Remote Sensing*, 47(7), 1999–2013.
- Njoku, E. G., Jackson, T. J., Lakshmi, V., Chan, T. K., & Nghiem, S. V. (2003). Soil moisture retrieval from AMSR-E. *IEEE Transactions on Geoscience and Remote Sensing*, 41(2), 215–229.
- Pathe, C., Wagner, W., Sabel, D., Doubkova, M., & Basara, J. (2009). Using ENVISAT ASAR Global Mode Data for Surface Soil Moisture Retrieval Over Oklahoma, USA. *IEEE Transactions on Geoscience and Remote Sensing*, 47(2), 468–480.
- Scipal, K., Holmes, T., De Jeu, R., Naeimi, V., & Wagner, W. (2008). A possible solution for the problem of estimating the error structure of global soil moisture data sets. *Geophysical Research Letters*, 35(24), Art. No.: L24403.
- Wagner, W., Lemoine, G., & Rott, H. (1999). A Method for Estimating Soil Moisture from ERS Scatterometer and Soil Data. *Remote Sensing of Environment*, 70(2), 191–207.
- Wagner, W., Naeimi, V., Scipal, K., De Jeu, R., & Martinez-Fernandez, J. (2007). Soil moisture from operational meteorological satellites. *Hydrogeology Journal*, 15(1), 121–131.