

original

aug 01, 2014



heliport heights by aLL design to infill london's south bank skyline



heliport heights by aLL design to infill london's south bank skyline

all images courtesy of aLL design

to fill a visual void in london's south bank skyline, [aLL design](#) is conceiving 'heliport heights,' a bold residential tower on a site along the thames. moreover, the project represents a beginning of a general redevelopment of the area, accommodating 14 apartments containing two balconies each. the structure is comprised of 15 floors, and elevated above an existing four-story building by stilts. the configuration arranges one living unit per level, with the top floor comprising of a duplex and large roof terrace. the skyscraper will provide views of the urban context, including the adjacent river and neighboring heliport, from which it takes its name.

designboom © 2014

[about us](#)

[advertise](#)

[contact us](#)

[copyright info](#)

[privacy](#)

[newsletter](#)





the 15-floor tower is elevated by stilts above an existing four-story structure

'heliport heights' takes a curving form, in order to create optimal panoramic views for each apartment. the structure tapers at the top and bottom to refine the overall geometry, while providing a desired reduction of floor plate area for the duplex penthouse. the tower will be clad in weathered steel, resulting in a warm reddish brown color. this tonality, along with multicolored balconies help to identify the skyscraper among the skyline and provide contrast. the project includes a refurbishment of the existing building, with plans for new cladding and added program such as offices, a penthouse, and parking.





a volume clad in polished stainless steel is suspended from the tower's underbelly, reflecting the streetscape below

a small gallery is located at the ground floor, beneath a canopy created by the tower above. enclosed by glass curtain walls for visual transparency to the public, the space functions for the display of art and includes a video projection wall. on the second level, a suspended volume clad in polished stainless steel reflects the streetscape below, and houses a conference room.



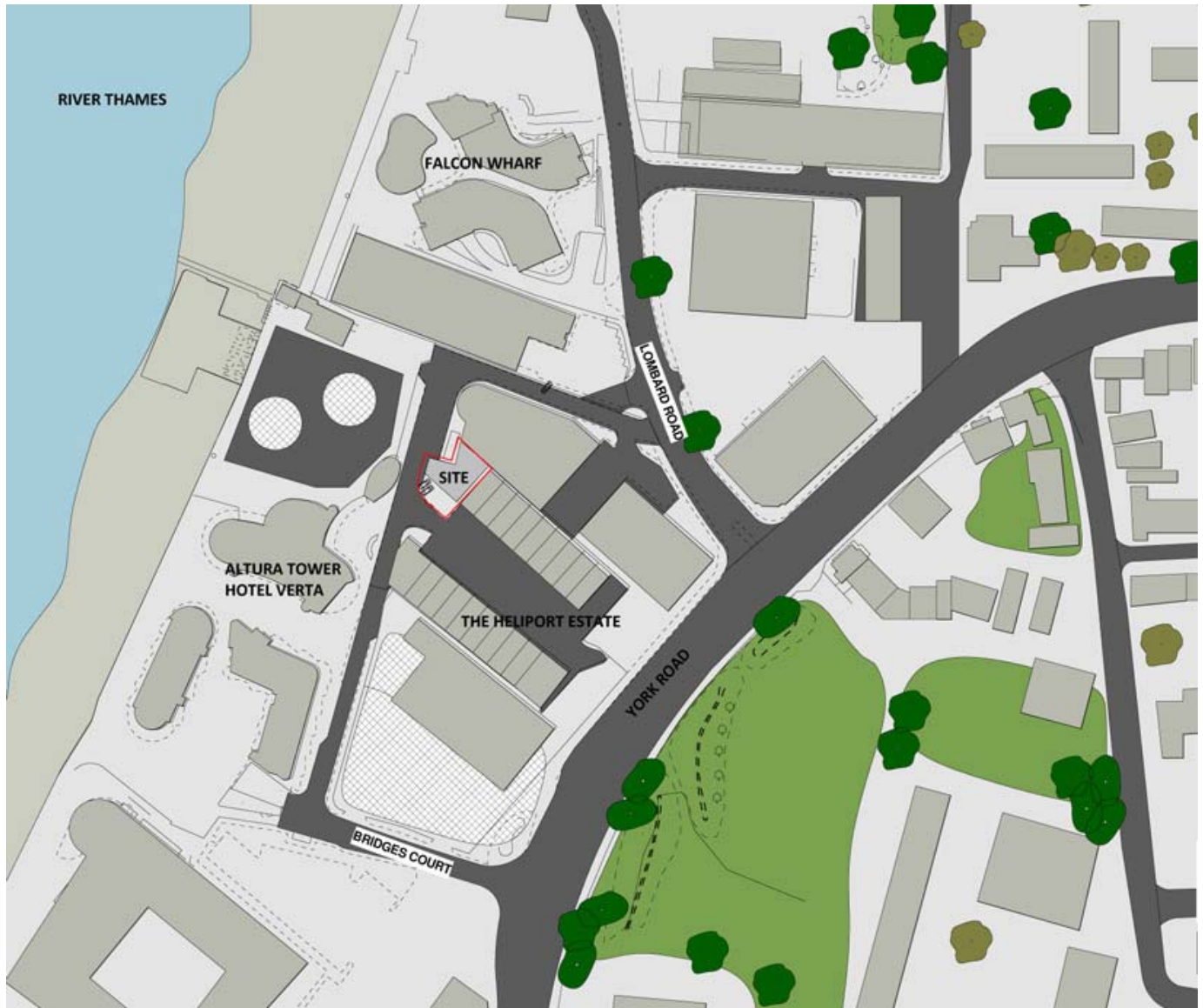
the weathered steel provides a reddish brown coloration, in contrast to the urban context





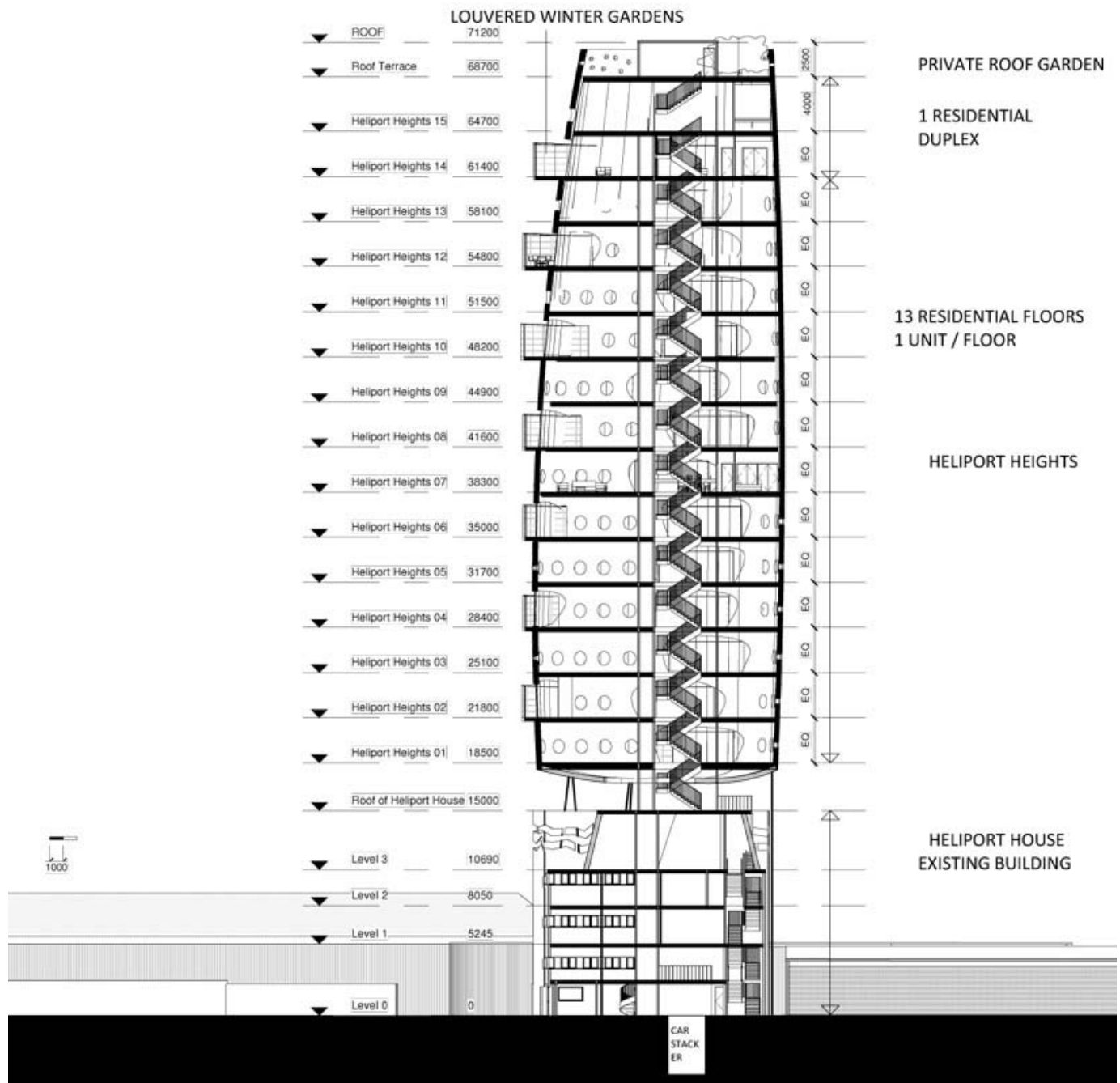
heliport heights stands out along the south bank skyline





urban context plan





building section

project info:

location: london, UK
 architecture: aLL design
 size: 3,722 sqm
 dates: 2013 - on going

trent fredrickson | designboom

aug 01, 2014

designboom © 2014 about us advertise contact us copyright info privacy newsletter



62 Tweet	13 Like	100	105 g+1	3 Share	<ul style="list-style-type: none"> • Stur • Sub 	0
-------------	------------	-----	------------	------------	---	---

name (required)

e-mail (will not be published) (required)

[comments policy](#)


LOG IN VIA  

submit



heliport heights by aLL design to infill london's south »


ARCHITECTURE

 283 shares



bruce mau design: new OCAD identity


DESIGN

 1677 shares

jun 20, 2008

'will alsop: OCAD, an urban manifesto' at the canadian »

ARCHITECTURE

 1 shares



product library



latona medium footstool
achilles associates
PRODUCT LIBRARY
MANUTTI
h 32 x w 66,5 x d 60 cm

[more: garden furnishin...](#)



laufen pro b | washbasin
peter wirz – year 2003
PRODUCT LIBRARY
LAUFEN
semi-recessed washbasin,
560x440x165 mm

[more: sanitaryware](#)



architecture design art technology shop

readers competitions product library interiors video interviews work

maps

newsletter (405,657)

product library



BENCHMARK



latest from benchmark furniture

will also (3 articles)