

# COLORIUM DÜSSELDORF GERMANY

Colorium is a dramatic 18-storey multicoloured tower on the waterfront in Düsseldorf's revived old port. Although designed as a commercial office building for a private client, Ibing Immobilien.dei GmbH & Co.Hochhaus KG, this new million landmark will play an integral part in the regeneration programme that is progressively transforming Düsseldorf's disused port and dock into a Media Harbour, incorporating a galaxy of international architectural talent.

Sited on an extremely constricted site on the Speditionstrasse peninsula, formerly home to a waterfront silo, the 12,400-gross-square-metre building takes the form of a dramatic 62-metre-high tower with two basement levels. The treatment of the external façade of the building, an intricate network of coloured glass, transforms what could be a conventional office into a towering mosaic artwork. The regularity of the floor pattern is broken up and blurred by the sophisticated and sensuous facade treatment using advanced glass technology using only 17 distinct types of panels. To ensure an even external colour appearance, the artwork is screen printed onto the glass with a reduced percentage of printed area in the vision panels.

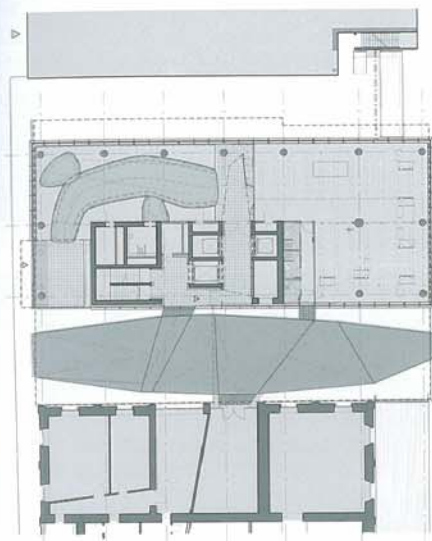
By laying the concrete frame, the mosaic façade contrasts the internal structure, scale and perspective of the building, creating a highly elusive and pictorial presence on the waterfront. The plant installation at level is transformed into a red light box projecting out over the water.



2

Colorium | Location Düsseldorf, Germany | Completion date 2001 | Architect Alsop Architects | Client Ibing Immobilien Handel GmbH; Hochhaus KG | Structural engineer Arup GmbH | Mechanical engineer Intecplan GmbH | Landscape architect Alsop Architects | Contractor Arbeitsgemeinschaft Hamelmann Heine | Height 62 m/203 ft | Above-ground storeys 18 | Use Office | Area of above-ground building 12,400 sq m/133,424 sq ft | Cost DM34 M

27



3

- 1 Quayside view
  - 2 Northwest elevation from Speditionstrasse
  - 3 Site plan
  - 4 View of entrance from west
  - 5 View from across the dock
- Photography: Christian Richters



4



5